



WEBER extrusion
Quality mechanical engineering



innovation. quality. partnership.

More than 100 years of **engineering** „Made in Germany“



For more than 100 years, WEBER has built quality machinery with consistent implementation of new ideas.

+500

Employees in Kronach

+100

Years of competence and know-how

+46.000

m² Production area

Starting out by building a grinding machine for slates in the 1920s, Weber have developed into one of the leading international companies in their sector: the development of the WEBER company is impressive.

Passion for new technologies has been in the genes for the last 100 years. Each new generation contributes its own, innovative ideas to the company's history. The family-owned business has become firmly rooted in today's market place, offering not only excellent, patented plastics extrusion and granulation machines but wood sanding and metal grinding machine process technologies as well.

Through the addition of the "robotics and automation" division in 2019, WEBER also set new standards in the area of vision-controlled industrial robotics and automation solutions.

MORE THAN 100 YEARS OF TRADITION WITH A VIEW TO THE FUTURE

Each WEBER division combines years of expert knowledge with innovative technologies. Behind each machine stands a team of specialists working together to create the best machines possible. The continuous advancement in development by our in-house research centres combines high-level engineering with exceptional quality.

LOCATED IN UPPER FRANCONIA FOR 100 YEARS

The foundation of "Maschinenfabrik und Eisengießerei Kronach GmbH" in 1922 is the historical origin of today's Hans Weber Maschinenfabrik. Today, WEBER has more than 500 employees, including 44 apprentices. For comparison: at the time of their 50th anniversary, there were 253 employees and 42 apprentices. In other words, the number of employees has almost doubled proportionally to the company's existence. WEBER occupies two locations in Kronach, on a total of 50,000m² of production area, and supplies customers from over 60 countries with machine technology "made in Kronach".



100 YEARS OF ONE BIG FAMILY

Many long term employees contribute to the familiar working atmosphere which characterises the Weber company as an employer. Just like the Weber family, many of the employees have generations of family that have worked for the company.

A handwritten signature in blue ink, appearing to read "Markus Weber".

Dr. Markus Weber

A handwritten signature in blue ink, appearing to read "Ludwig Weber".

Ludwig Weber



Technology allied to environmental protection is **WEBER's aim**

INNOVATION. QUALITY. PARTNERSHIP.

Thanks to state-of-the-art machine concepts and consistent research, WEBER manages the balancing act between high performance and the best possible energy consumption. The energy-efficient and process-optimised systems reduce running costs in production.

WEBER thinks green - for this reason, there is no extruder component that is not consistently developed, all machines have a high standard of energy efficiency. But WEBER's goal is to become even better, even more efficient and even greener.



For many years, the energy optimisation of WEBER extruders has been at the heart of our development efforts.

WHY WEBER?

- + Individuality right from the start
- + Industry 4.0
- + High availability of spare parts both for new and old machines
- + In-house gearbox development and construction (the only one on the market)
- + High level of vertical integration
- + Special features : possibility to supply laser-hardened process units and optimised wear package

+80

Patents

+90%

Vertical integration

TECHNOLOGY ADVANTAGES

- + Optimisation of drive technology
- + Efficient barrel heating/cooling
- + Internal screw temperature control
- + Application-optimised extrusion solutions



For over 60 years, we at Hans Weber Maschinenfabrik have been developing and manufacturing extruders, extrusion systems, extruder screws and gearboxes

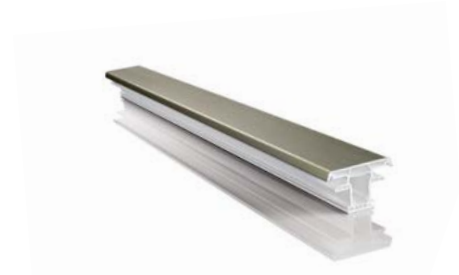
EXTRUDER SOLUTIONS FOR MANUFACTURERS WITH THE HIGHEST DEMANDS

We offer a very high level of manufacturing depth. This means that we focus on your needs and requirements for our extrusion systems starting from the frame design. We provide complete extrusion lines up to and including the stacking automation. At our location in Kronach, we manufacture extruders and die heads. For calibration / cooling, haul-off, saw, and other downstream equipment, we rely on our experienced and tested partners in Europe. Our machines are used in various applications including pipe extrusion, extrusion of technical plastics, window profile extrusion, and granulation. In addition to developments and production, we place great emphasis on the connectivity of our machines and offer the MES solution NEXXT365, which combines a production control system with a manufacturing execution system.



WEBER technology leader in extruders for window profiles

Made in Germany, appreciated worldwide: When it comes to window profile more than 100 countries worldwide rely on WEBER extruders, the technology leader offers a varied portfolio, that meets the special requirements in this sector. Customers can choose between a variety of output ranges and technical designs. Regardless of the decision, one thing always remains the same: proven WEBER quality.



WEBER extrusion

DS series twin parallel screw extruders

The DS series stands for concentrated extrusion power in the smallest of footprints. Our parallel twin-screw extruders achieve maximum output rates allied to patented technology and exceptional process stability. The consistent in-house development of the processing units and gearbox guarantees maximum efficiency and availability – “Made in Kronach” for demanding applications worldwide.

600
kg/h Output capacity

24/7
Availability

TECHNOLOGY ADVANTAGES

- + Infinitely adjustable filling zone allows for volumetrically controlled material filling
- + Process-optimised processing units for a wide range of recipes and material shapes
- + Patented overload protection on the distribution gearbox
- + Patented high-torque gear units from our own design and production
- + Regulation of the screw fill level by level sensor

Modular design -
maximum innovation



OUTPUT (PVC) *

DS6	30-120 kg/h
DS7	70-180 kg/h
DS8	70-230 kg/h
DS9	120-350 kg/h

DS11	200-430 kg/h
DS12	220-550 kg/h
DS13	230-600 kg/h

*based on reference material



WEBER extrusion Inventor of the DUO concept

DO YOU HAVE ANY SPACE LEFT?

WEBER Duo technology combines maximum output and flexibility with minimal space requirements, and with the reliability and quality you are used to from WEBER extruders.



Utility model protection

DGBm 298 09 348.0 from 1998-2008



DUO AND CO EXTRUSION THE PERFECT COMBINATION

The modular design of WEBER products allows for brand-new combinations: In addition to two main extruders, two co- extruders can also be attached. In this way, a compact and space-saving quadruple extruder set up with independent control units is created.

ADVANTAGES OF THE DUO CONCEPT

- + Separate control of the individual strands
- + Simultaneous extrusion of different profile geometries
- + Easier handling when starting and stopping the line
- + Maximum line flexibility in terms of output
- + Integration of co-extruders possible
- + Increase in storage capacity (output per m²)

WEBER twin screw injection extruder for any co-extrusion application

Limited space and high flexibility requirements are the reasons for investing in a WEBER co-extruder. Co-extrusion means that the main extruder "piggybacks" the main line extruder - a particularly space-saving and practical arrangement.

The conical twin-screw extruders in the CE Z series are mainly used to process PVC-U. This extruder series is used when co-extruded window profiles are to be produced. And all are made in Germany with decades of experience

up to **300**
kg/h Output capacity

ADVANTAGES

- + High-performance coextruder up to 300 kg/h, suitable for advanced high-performance coextrusion dies
- + Can be retrofitted and integrated into existing systems (including third-party extruders)
- + High pressure build-up and high process stability
- + Compact, space-saving design, individual solution possible
- + High flexibility when processing different materials (regrind, granulate, dryblend)
- + High pressure build-up and high stability
- + Extremely flexible output range

SHORT and COMPACT, the space-saving WEBER co-extruder:
the tailor-made solution for any co-extrusion application

OUTPUT (PVC) *

CE3 Z	5-30 kg/h
CE5 Z	15-80 kg/h
CE7 Z	50-210 kg/h
CE8 Z	70-300 kg/h

* based on reference material



WEBER extrusion for PVC pipes

WEBER PVC pipe extrusion lines offer excellent performance in processing a wide range of PVC types and dryblend compositions. All assemblies including processing unit, distribution gearbox and reduction gearbox are "Made by WEBER"!



PIPE TYPES

PVC PRESSURE PIPES

- + Application in water transportation, industry and agriculture

PVC PIPES

- + Waste water pipes (sewer)
- + Plumbing
- + Rainwater/drainage (storm/drainage)
- + Cable protection
- + Well pipes

C-PVC PIPES

- + Domestic installation for hot water pipes up to 80°C
- + Multilayer pipes

ADVANTAGES

- + Wide processing range of different PVC materials using IF screw technology
- + Excellent plasticising, homogenising and dispersing
- + Problem-free processing of regrind, ground material and highly filled PVC
- + Application-oriented processing units
- + Control of the screw fill level using a level sensor



CONICAL TWIN-SCREW EXTRUDER

OUTPUT (PVC)*

CE3R	5-30 kg/h
CE5R	15-100 kg/h
CE7R	40-250 kg/h
CE8R	50-350 kg/h

* based on reference material

PARALLEL TWIN-SCREW EXTRUDER

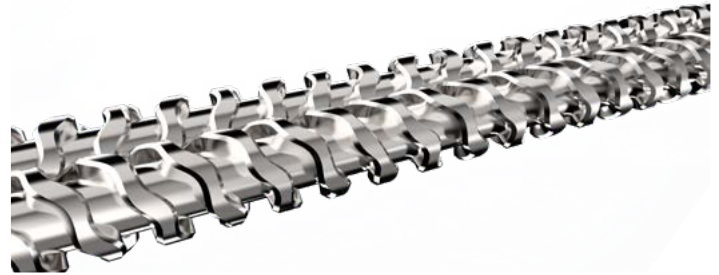
OUTPUT (PVC)

DS6R	18-120 kg/h
DS7R	60-450 kg/h
DS8R	45-300 kg/h
DS9R	100-800 kg/h

DS11R	130-850 kg/h
DS12R	195-1300 kg/h
DS13R	165-1100 kg/h
DS14R	300-2000 kg/h

WEBER extrusion IF screw

Process engineering is our passion. With a wave-shaped, patented screw geometry, we have succeeded in introducing a new generation of extruder screws that offer manufacturers a number of advantages. These screws are mainly used for PVC pipe extrusion, pelletizing and PEXA processing. Also when using high filler content and recycle.



Screws from WEBER! It's the "inner" values that count.
Our screws are designed, manufactured, wear-protected and repaired
in-house at WEBER. 100% Made in Germany!



ADVANTAGES

- + Indirect extension of the processing unit by 15%
- + Available for almost all extruder sizes
- + Upgrade of older processing units possible
- + Better melt homogeneity
- + Stronger plasticisation
- + Higher output range
- + Positive wear behaviour

WEBER extrusion PVC single-layer pipe heads

Get your pipe into shape with pipe heads from WEBER. Well-matched pipe head sizes cover a wide range of diameters and capacities. Suitable for PVC-U and C-PVC as well as other thermoplastics.

>1000

kg/h Output capacity

≤630

mm Pipe diameter

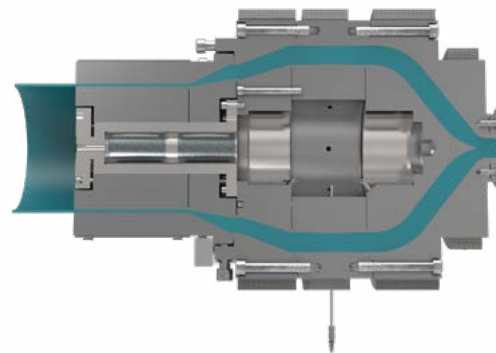
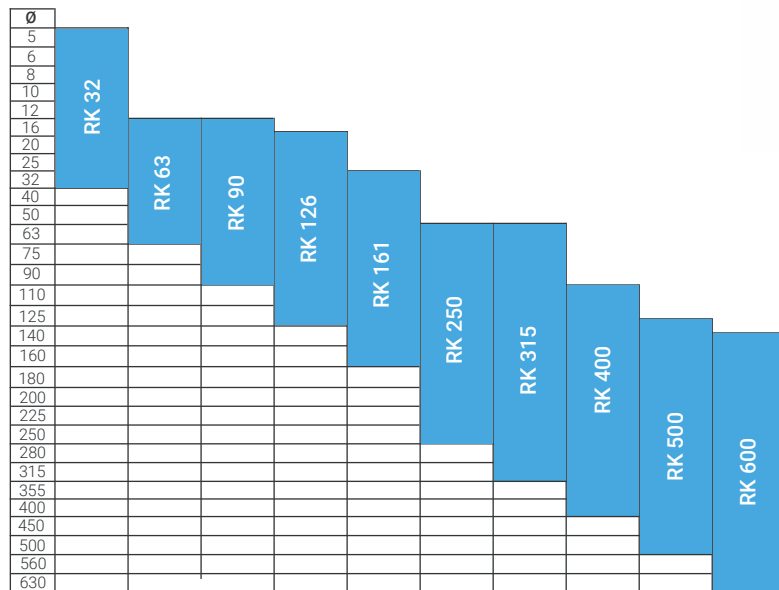
ATTRIBUTES

- + Robust handling
- + Chrome-plated or 1.2316 material selection possible
- + With thermal wall thickness control
- + Double strand up to $\varnothing 110\text{mm}$ or 4-fold strand up to $\varnothing 32\text{mm}$ available with corresponding pre-distributor (special solution possible)
- + Good wall distribution
- + Smooth pipe surface
- + Easy assembly and disassembly
- + Optimised rheological melt flow in the strainer and pipe head
- + Low energy requirement due to thermal insulation

Easy handling, maximum flexibility

PIPE HEAD CHART

PVC-U pipes DIN 8062
and DIN EN ISO 1452-2



WEBER extrusion PVC multi-layer pipe heads

Universally applicable PVC multilayer pipe heads from WEBER guarantee high process reliability when extruding foam core pipes and low-stabilised recyclates in the middle layer. This is achieved by a quill distributor with the smallest possible diameter and a conventional strainer head for all 3 layers. Parallel arrangement of 2 or 3 extruders in a very small space or piggy-back solutions are possible.



Innovative extrusion technology to meet the highest demands

PIPE HEAD CHART

PVC multi-layer pipes / 3-layer

Ø	FBL 2	FBL 3
32	FBL 2	FBL 3
40		
50		
63		
75		
90		
110		
125		
140		
160		
180	FBL 2	FBL 3
200		
225		
250		



ATTRIBUTES

- + Very good layer distribution with the smallest wall thickness tolerances possible
- + 2 or 3 layers can be converted
- + Fine adjustment for easy centering
- + Infinitely adjustable layer thickness ratios
- + Surfaces of the flow channels chrome-plated or VA steel
- + Quick and easy assembly and disassembly
- + Output capacity up to 1400 kg/h

WEBER extrusion for PO pipes

WEBER high-performance extruders for polyolefin processing – “High Performance” for pipe extrusion! Specially developed processing units enable excellent processing of PE-HD, PE-RT and PP with high throughput rates and very good homogenisation and dispersion. Specially adapted processing units to processing units with grooved barrels enable high throughput rates at low melting temperatures, low energy consumption and very good homogenisation.

WEBER OFFERS EXTRUDERS AND EXTRUSION LINES FOR THE FOLLOWING PIPE TYPES

HD-PE PIPES

- + Gas pipes
- + Drinking water pipes
- + Waste water pipes
- + Corrugated conduit applications for electrical installations
- + Corrugated conduit composite pipes using the coextrusion process

PE-RT PIPES

- + Cable conduits
- + Hot water pipes

PP PIPES

- + For industrial applications
- + For hot water sanitary areas (HD pipe)
- + Drinking water pipes

PP-R PIPES

- + Piping system for high pressure and temperature loads

MULTI LAYER PIPES (PE/PP/PPR)

- + Sound insulation - PP, middle layer highly filled with CaCo3 or BaSo4
- + PE 3-layer pipe - middle layer physically foamed
- + PP - PPR-GF-PP - PP pipes with glass fiber reinforced middle layer

Precision and efficiency for optimum flow capacity

OUTPUT(HD-PE) *

NE3	100 kg/h
NE5	650 kg/h
NE6	1050 kg/h
NE7	1550 kg/h
NE9	1800 kg/h

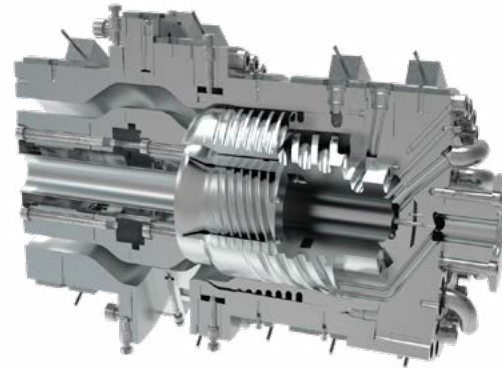
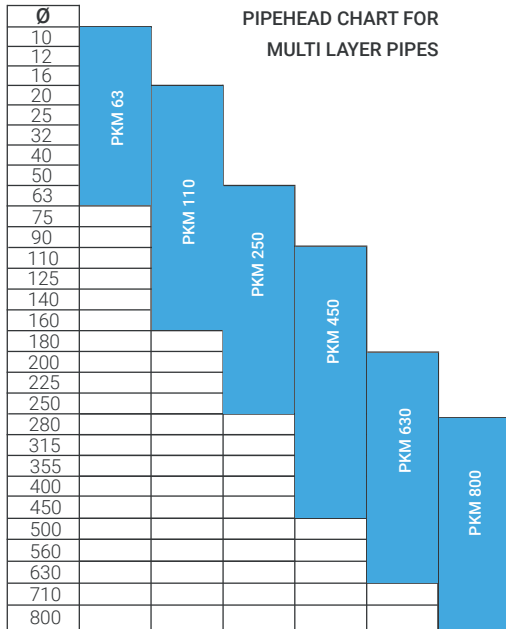
* based on reference material


ADVANTAGES GROOVED BARREL EXTRUDER

- + High pressure output with small machine size offers space savings
- + Excellent homogenisation and dispersion for different materials
- + Various wear protection designs, tailored to the materials to be processed (fillers, glass fibres, colour batch)
- + 150kW frequency inverter and water cooled motor, closed cooling circuit ensure a high reliability and low noise
- + High efficiency and long service life of the drive. The drive operates in the energy-efficient range, never at full capacity
- + High-quality, energy-efficient, durable drive train thanks to selected components, low motor speed and WEBER gearbox



Targeted combination for increased stability and durability





WEBER extrusion

PE-RT 5 layer pipe lines

PE-RT pipe lines from WEBER. A interaction of perfectly matched line components for easy-to-handle, reliable extrusion. With very high haul-off speeds, extremely thin layer and good surface qualities. As well as a higher-level overall line control system NEXXT365 to increase the degree of automation and therefore more economical production.

ATTRIBUTES

- + PE-RT pipes from 8-32mm
- + 70m/min line speed
- + EVOH layer thicknesses of less than 0.03mm possible
- + Newly developed pipe head technology with optimised melt channel design
- + Compact, space-saving extruder layout
- + Output rates of up to 500 kg/h
- + Suitable for PE-RT material types

Extrusion technology for
the production of PO pipes



WEBER extrusion PEXa extruder



High-performance extrusion of cross-linked polyethylene pipes with WEBER extruders in conjunction with infrared cross-linking technology enable even more economical production of high-quality PEXa pipes. Extruders and pipe heads are characterised by high process reliability at very low, homogeneous melting temperatures and a high degree of cross-linking. Different types of plastic, e.g. C2 or C3, can be easily processed in accordance with country-specific standards. Alternatively, PE-RT can also be extruded on the machine.

APPLICATION AREAS

- + Heating and sanitary facilities
- + Geothermal systems
- + District heating
- + Industrial applications

OUTPUT (HD-PE) *

CE7 PEX	35-100 kg/h
DS7 PEX	60-120 kg/h
DS9 PEX	80-400 kg/h

* based on reference material

TABLE WITH DIAMETER RANGE

PKX1	8-32 mm
PKX2	16-63 mm
PKX3	63-160 mm

PEX pipehead for extrusion with high thermal requirements



ATTRIBUTES

- + IF screw technology
- + PEX-specific special solutions
- + Many years of process engineering experience
- + OS5 control system with open interfaces, e.g. OPC-UA, Euromap 27
- + Cooperation partner with IBA and I-Extrusion

WEBER extrusion

Pipe - complete lines


DO YOU WANT A SMOOTH PRODUCTION START?

With pipe lines from WEBER - everything from a single source - you can play it safe. We work with you from the initial idea to the finished product, reliably, competently and in partnership. PVC pipes up to Ø630 and PO pipes up to Ø120mm as well as high speed PE-RT pipe lines are part of our portfolio. Energy-saving detailed solutions increase efficiency and contribute to CO₂ reduction. Our OS5 line control system enables simple, intuitive operation of complex systems. The integration of the extrusion line into MES and ERP systems can be realised with our NEXXT365 software.



WEBER does not only offer the suitable extruder types, but also complete extrusion lines, consisting of:

- + Material Conveying
- + Gravimetrics
- + Melt Pump
- + Extrusion Tooling / Die Head with up to 5 layers
- + Inline Measurement System
- + Haul off
- + Saw
- + Socketing Machine
- + Vacuum Tank
- + Cooling Tank
- + Tipping Chute / Packaging Unit
- + Winder



WEBER - technical extrusion applications

WEBER's flexible extruder concept offers the right extruder for a wide range of thermoplastics such as ABS, PA, TPU, PUR or PEEK.

The single-screw extruders are available in sizes from 20 to 80mm screw diameter. With smooth or grooved feed bush and processing units in lengths of 25 or 30 L/D.

ATTRIBUTES

- + Integrated OS5 Mini control unit as standard
- + Can also be used as a co-extruder or as a piggyback version with separate control cabinet
- + Individual wear protection for processing units
- + Wide performance range
- + Integration in existing extruder control possible
- + Special solutions
- + Screw can be removed to the rear
- + Direct drive
- + Compact design

PX Series
Single-screw extruder



		screw-Ø [mm]	L/D	HDPE [kg/h]	PP [kg/h]	PA6 [kg/h]	PVC-P [kg/h]	PVC-U [kg/h]	PC [kg/h]	ABS [kg/h]
PX2	PX20.20	20	20	8	4	6	6	6	5	7
PX3	PX30.25	30	25	15	12	25	25	25	20	25
	PX25.30	25	30	30	15	30	30	-	25	30
PX4	PX45.25	45	25	40	32	60	50	50	35	45
	PX35.30	35	30	80	60	70	70	-	75	60
PX6	PX60.25	60	25	50	50	80	60	60	80	80
	PX50.30	50	30	180	140	120	120	-	100	120
PX8	PX80.25	80	25	140	100	120	110	110	100	140
	PX75.30	75	30	220	180	170	170	-	-	180

CE Series

Twin screw extruder: Versatility that sets standards

Whether hoses, technical profiles, sheathing or special solutions - WEBER offers highly flexible extrusion systems for a wide range of technical applications. Our PX and CE series offers optimum processing units for a wide range of materials such as ABS, PA, TPU, PUR or PEEK. With customised line layouts, state-of-the-art control technology (OS5/NEXXT365) and comprehensive services, we support our customers from the initial idea through to implementation.

TYPICAL FIELDS OF APPLICATION

- + Cable conduits & corrugated hoses
- + Profiles for the construction, electrical and automotive industries
- + Sealing and clamping profiles
- + Semi-finished products and technical hoses

OUTPUT (PVC) *

CE3	5-30 kg/h
CE5	15-80 kg/h
CE7	50-210 kg/h
CE8	70-300 kg/h
DS6	25-120 kg/h

*based on reference material

WEBER technical extrusion applications

Complete line

WEBER offers complete extrusion lines with optimally coordinated line components from A to Z. From the idea to the finished implementation, we support you with process engineering expertise for the production of various technical profiles, pipes or hoses. Using customer-specific software solutions on the OS5 control system and a higher-level NEXXT365 overall line control system, we are well equipped for industry standard 4.0.

ATTRIBUTES

- + Consulting and project planning
- + Line layout
- + FAT in the WEBER technical centre
- + Commissioning
- + Service/training



WEBER PVC granulation: energy-optimised, efficient, sustainable

The production of high-quality PVC pellets from powder, recycle or regrind is an important contribution to sustainability and resource conservation. With innovative detailed solutions and a high degree of automation in our WEBER pelletising systems, we make the process user-friendly, reliable and economical.

OUTPUT kg/h	PVC-P WITH PRESSURE	PVC-U PIPE	PVC-U PROFILE	PVC-U FITTINGS
DS9 G	890	800	480	850
DS11 G	1150	1040	640	1040
DS12 G	1300	1300	720	1300
DS13 G	1600	1420	850	1620
DS14 G	2370	1700	940	1970





ATTRIBUTES

- + Individual and project-related line components
- + Wide processing range of different PVC materials thanks to IF screw technology
- + High-quality wear protection for screws and barrels
- + Fast colour changes
- + Pilot plant trials on pelletising systems possible
- + Fast set-up times
- + Simple one-man operation thanks to swivel arm mechanism

YOUR ADVANTAGES AT A GLANCE

- + High output
- + IF screw technology
- + Fast colour change
- + Easy cleaning

WEBER PVC granulation: energy-optimised, efficient, sustainable



GRANULATING HEAD KG8

+ PVC granules hot-cut by rotating blades

TYPE	MAX. THROUGHPUT	MATERIAL
KG 8	2500 kg/h	PVC-U, PVC-P

DW2 and DW4 force feed equipment - from powder to granulate

When things do not go to plan. In the case of non free-flowing materials, the force feed equipment ensures reliable filling of the extruder screws. Even for materials with low bulk density, the WEBER force feed equipment manages high output capacities.

Suitable for various extruder sizes.



TYPE	SCREW-Ø (mm)	MAX. CONVEYING CAPACITY PVC-P	RECOMMENDED FOR EXTRUDER SIZES
DW 2	100 mm	1000 kg/h	DS9, DS11. DS12
DW 4	130 mm	1500 kg/h	DS13, DS14. DS15

WEBER wear protection packages - for longer service life

Wear is an unavoidable occurrence. Wear is all the more noticeable in systems in which considerable forces are at play. WEBER has developed effective protective measures to combat wear in all its manifestations. Our solutions focus on the three main types of wear: abrasive wear caused by mechanical abrasion, corrosive wear caused by chemical reactions, and adhesive wear caused, for example, by friction welding.



BASIC

- + Formulation without abrasive ingredients
- + Standard applications
- + High surface hardness
- + Screws can also be coated



ADVANCED

- + With a low proportion of abrasive components
- + Greater wear protection against abrasion
- + Good corrosion resistance
- + Very high hardening depths >0.5 mm



PREMIUM

- + With a high proportion of abrasive components
- + Maximum wear protection thanks to armored outer diameter
- + Maximum wear and corrosion protection of the barrel
- + Coordinated friction pairing



SPECIAL

- + With a very high proportion of abrasive components
- + Maximum wear protection thanks to armored outer diameters
- + Maximum protection against abrasion thanks to additional coating

WEBER extrusion DS wear measurement system

With the fully automatic and non-contact DS wear measurement system from WEBER, you can always keep an eye on the condition of your processing units. Thanks to the 360° scan, high measuring accuracy and digital data log, wear patterns can be precisely documented and maintenance intervals planned - for maximum process reliability and an extended service life for your systems

Designed for the measurement and inspection of geometric parameters of cylindrical components - the new WEBER measuring and inspection system PROBIUS Ultimate can be used as a tool for quality assurance and wear assessment of twin-screw cylinders and performs non-contact scanning of radial sections, measuring different geometric parameters such as diameter and wear vertically/diagonally.

$\pm 0,01$
mm Precision
360
Degree rotating scanner

YOUR ADVANTAGES AT A GLANCE

- + Fully automatic & non-contact measurement
- + Accuracy ± 0.01 mm
- + Component diameter $\varnothing 65$ mm - $\varnothing 125$ mm
- + Rotating scanner (360° measurement)
- + Creation of a data log
- + Component-specific centering

Measurement of different geometric parameters, such as diameter, vertical/diagonal wear



FUNCTIONS AND TECHNOLOGY OF THE MEASURING SYSTEM

Due to different cylinder sizes, the probe is centred in the cylinder by interchangeable rings. The movement along the component length is performed manually via a multi-section rod. The measurement data is displayed in the software and can be saved as a data log. Thus, a change in the wear (progression) can be created on the basis of different operating hours. This is used to reliably predict wear behaviour and service life.



NEXXT365

Extruder and line management

NEXXT365 connects the world of machines with the specific know-how of our customers in a unified platform for the organisation and execution of production processes. The software automates, organises, controls and optimises the entire machine system.

CORE FUNCTIONS



Line control



Performance analysis



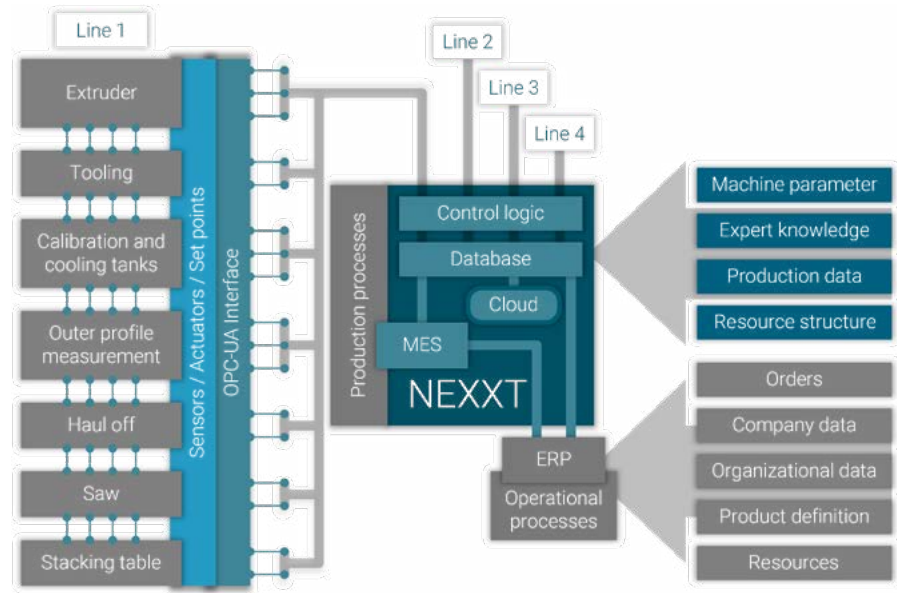
Control algorithms



Notifications



Order management



NEXXT365 is the platform for storing your process know-how: With data from higher-level systems and the interface directly to the machine, a digital production order is created that is available directly at the workstation without any paper involved. At the machine, NEXXT365 gives control over the whole production line and, from the office, enables the comfortable management and analysis of production data of the entire machine park.

YOUR ADVANTAGES

- + Reduction of start-up losses by semi-automated start-up of all components in a production line
- + Energy and resource savings through process analysis
- + Reduction of personnel deployment and scrap parts by automatic error correction and control algorithms
- + Global production parameter dataset consisting of process, order and quality assurance data
- + Numerous graphical analysis and evaluation functionalities
- + Data exchange with company ERP and BDE systems possible

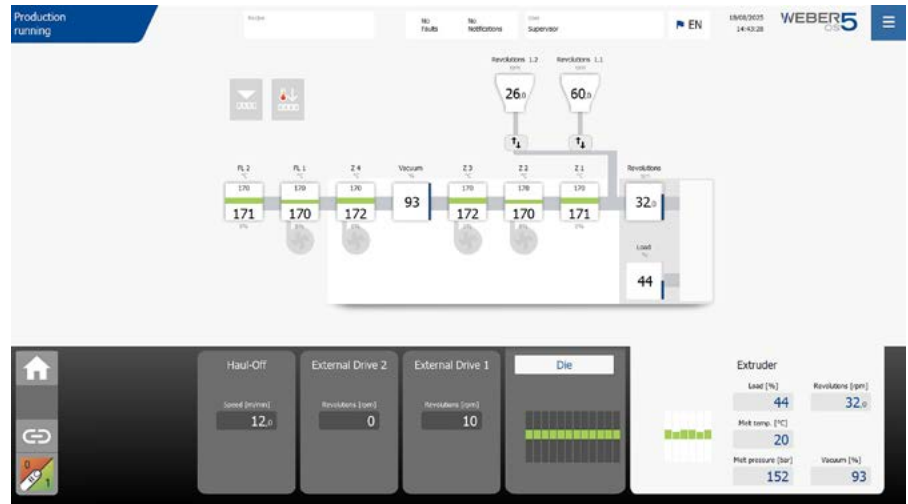


WEBER OS 5 - control system

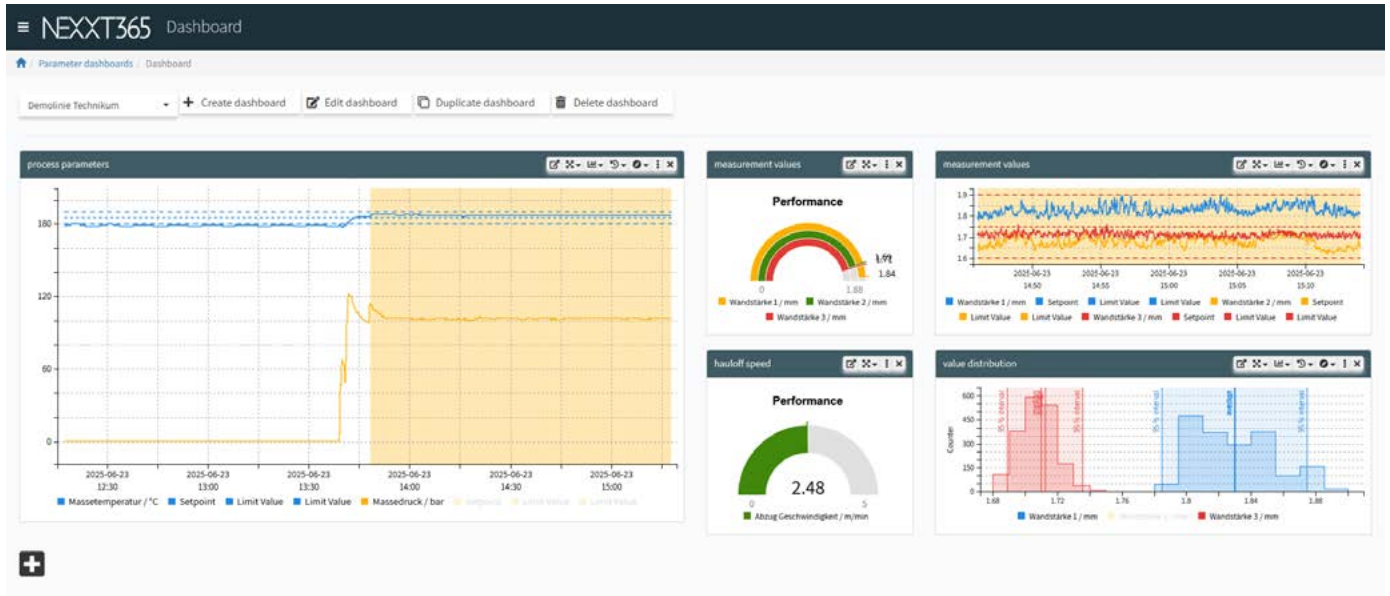
Intuitive, networked, powerful - the OS5 control system from WEBER takes your extrusion line to a new level. With open interface technology, intelligent user guidance, recipe management and end-to-end line expertise, OS5 offers the perfect platform for Industry 4.0. Combined with NEXXT365, the result is a complete digital solution that sustainably increases efficiency and ease of use.

FUNCTIONS

- + Euromap 84 / OPC 40084 MES connection
- + Euromap 27 Line control
- + User management (possible with RFID)
- + Extruder control with line competence
- + Automatic start-up
- + Simple scaling
- + Intuitive machine control via touchscreen
- + Diagram function for quick analysis
- + Recipe management



WEBER OS 5 control system in combination with NEXXT365 takes digitised production to the next level.



WEBER custom made extrusion solutions

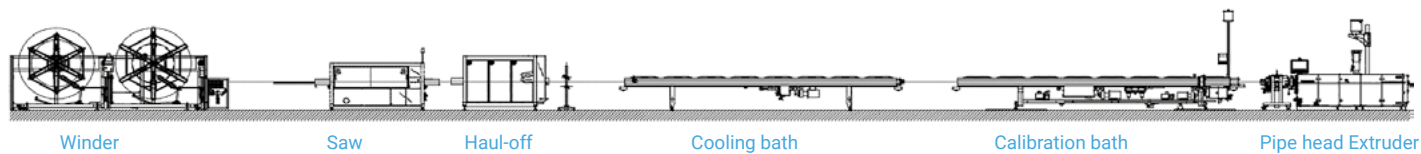
WEBER designs custom-made extrusion lines according to customer specifications or - if desired - based on the expertise available in-house, using suitable line components from established business partners. This also includes a technical consultation for the customer, including full software solutions.

The WEBER extruder is manufactured in-house with the processing unit (cylinder, screw, grooved bush, wear protection) according to the material to be processed. In other words, the design of the process unit is adapted and matched to the materials that will be used.

ALL OTHER LINE COMPONENTS, WHICH ARE OBTAINED FROM ESTABLISHED BUSINESS PARTNERS IN RELATION TO THE EXTRUDATE, ARE ALSO PURCHASED, SUCH AS:


- + Material drying
- + Material feeding
- + Gravimetrics
- + Dosing
- + Melt pump
- + For technical profiles: Extrusion tool with calibration
- + Calibration table
- + For small pipes and hoses: Pipe head
- + Vacuum tank
- + Spray baths
- + Combination of vacuum tank and spray bath
- + Measuring systems
- + Labelling systems
- + Haul-off
- + Saw or haul-off-saw combination
- + Tilting table / packaging unit
- + Wrapping station (semi- or fully automatic)

COMPLETE SYSTEMS FOR PE PIPES



4-STRAND SYSTEM FOR PVC PIPES





WEBER Next Level

service support

365

Days customer portal availability

80%

Are solved in the first contact

We rely on long-term and cooperative partnerships and a continuous exchange of experience with our customers. Exactly for this reason, service is extremely important to us! We firmly stand by a promise to our customers: we want to support our customers & machines for the long term. This high quality standard is reflected in the continuous research and development efforts we put into our products, but also in the support of our customers before, during and after the conclusion of the purchase.

It does not matter whether the customer's location is in our vicinity or thousands of kilometers away. Using the latest technologies we are able not only to make remote diagnoses but also to solve many of the problems fast and without complications. There are various easy options to contact our Service team. Whether by phone, email or, a new way, via our customer portal.

WEBER XRM-System - a milestone for digital service excellence and customer loyalty



WEBER Technical Support

Our specialists are there to help with technical assistance.

WEBER Field Service

Worldwide and directly at the site of operation.

WEBER Central Repair

Possible repair of old / used parts.

WEBER Visual Support

For fast and easy trouble-shooting.

WEBER Retrofit

The simple art of modernising control systems.

WEBER Technical Trainings

Benefit from the expertise of our employees.

WEBER Machine Checks

For trouble-free operation and the highest efficiency.

WEBER Spare Parts

All from one source.



WEBER – innovation. quality. partnership.

Hans Weber Maschinenfabrik GmbH
Bamberger Straße 20 · D-96317 Kronach

Phone: +49 (0) 92 61 / 40 9 - 0 · Mail: info@hansweber.de



[hansweber.de](https://www.hansweber.de)



HANSWEBER Maschinenfabrik